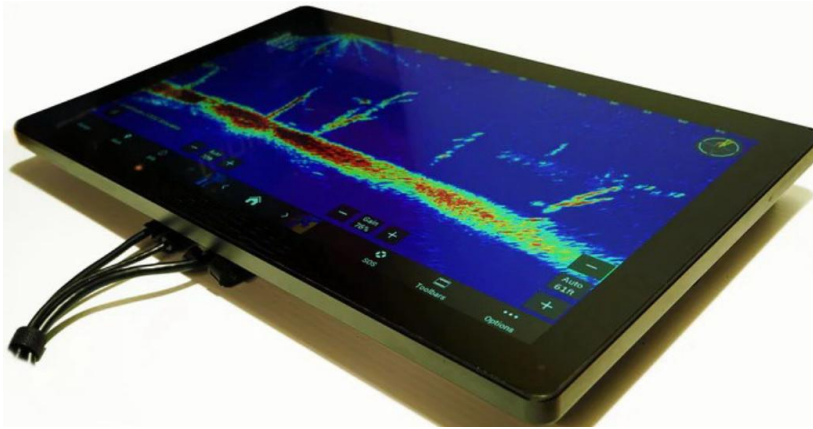


# TDD-PTM-CF156WPM

## 15.6" Marine Waterproof Closed Frame PCAP Touch Monitors



### Overview

The TDD Touch Monitors include Standard, Industrial (Open Frame Bezel-free | Rear Mount, Panel Mount, Closed Frame), Outdoor, Waterproof, Stainless Steel, Marine, Curved, Desktop POS, Commercial Displays, Medical and Custom types, delivers an industrial, reliable and cost-effective solution with outstanding image clarity & accurate touch response for OEMs & systems integrators. 7-98" sizes with rugged bezel, flat structure, high durability and versatility for Kiosks applications from Self-service, Automated Parking, Industrial Automation, Outdoor Control, Healthcare to Gaming.

### Features

- Touch thru glass (Sunlight Readable&Anti-mist Optical Bonding) enabled with PCAP supports thickness up to 5mm
- Embedded design with Rugged TFT Panel, Sturdy Aluminum Enclosure with bolting holes&gimbal side mount kit
- IP67 Fully Enclosed Fanless Design with M12 Metal I/O Connectors, flexible mounting in any table, kiosk or cabinet

### Specifications

#### Panel

Diagonal Size	15.6"(16:9), 39.5cm, Active matrix TFT LCD (LED)
Active Area (mm)	344 mm x 194 mm
Resolution	1920 x 1080
Viewing Angle	Horizontal: 89° or 178° total / Vertical: 89° or 178° total
Number of Colors	16.7 million
Brightness (typical)	1500 nits
Response Time-total	30 (Typ.)(Tr+Td) ms
Contrast Ratio	800:1
Input Video Frequency	Horizontal: 30 - 60 KHz / Vertical: 50 - 75 Hz

#### Touch

Touch Technology	PCAP (Projected Capacitive) - 10 Touch Capacity (Optional: Waterproof Firmware)
Surface Treatment	Water, Dust & Vandal proof; Optional: Anti-glare, Anti-fingerprint, Anti-smudge, Anti-bacterial
Supported OS	Windows / Android / Linux / Mac

#### Interfaces / Connectors / Controls

Video Interfaces	HDMI x1 / USB x1 for Touch; HDCP: Yes
Connectors & Controls	DC x1; LAN x1 & Remote Control (for OSD); Brightness Knob x1; On and Off Button x1

#### Power

Supply / Consumption: 100-240 VAC / 12VDC +/- 5%; 20W typical, 1.5W sleep, 0.5W off

#### Mechanical

Product Dimensions: 399.7 x 247x 50mm / Weight(Unpacked/Packed): 4.85 / 6.75kg  
Box Dimensions: 480 x 170 x 350mm / VESA Mounting: 75 x 75 / 100 x 100mm

#### Environmental

Operating / Storage Temperature: -20°C to 75°C (except for some models)

#### Accessories

Power adapter/cable(4m), HDMI/USB cable(8m) w/ type-c convert, gimbal mount kits (opt.)

#### Others

MTBF / Warranty / Enclosure Color: 50,000 hours demonstrated / 1-year / black | silver  
Ready for Use: 24/7; Marine grade(moisture, salt spray & fungus proof for mainboard)

\* TDD ([www.tddtouch.com](http://www.tddtouch.com), [sales@tddtouch.com](mailto:sales@tddtouch.com)) reserves the right to change specifications without prior notice.